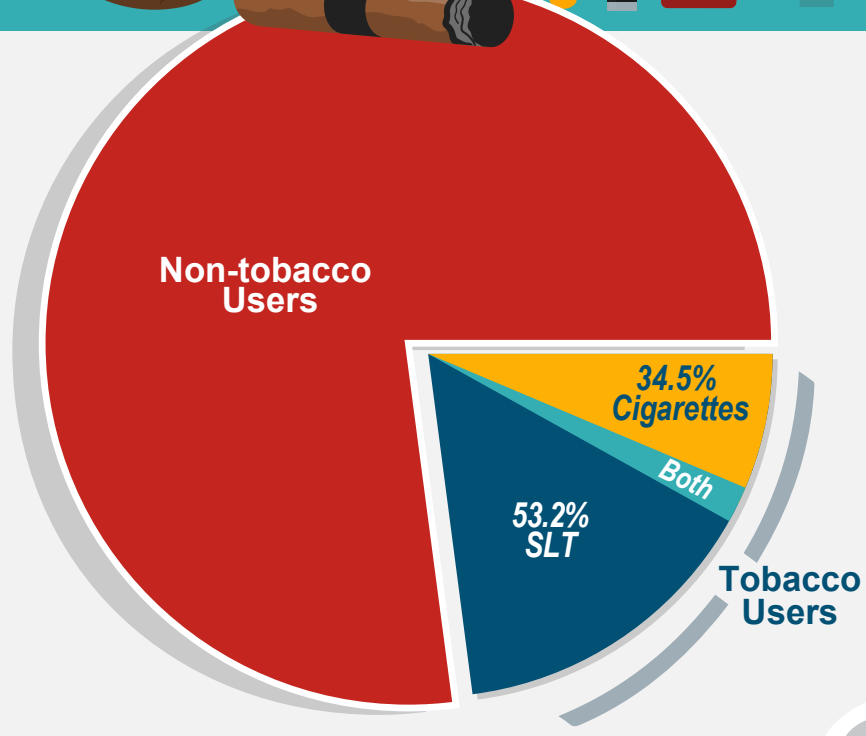


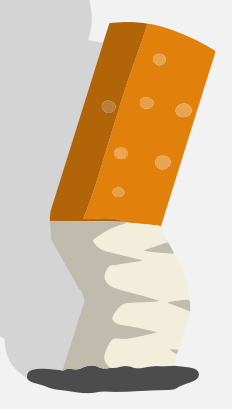


# TOBACCO USE AMONG FIREFIGHTERS



## GOOD NEWS:

Smoking among firefighters has decreased and is lower than the national average for males.

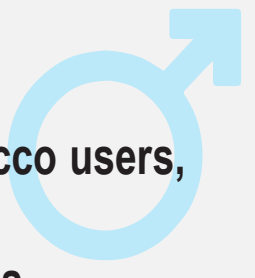


## Not so GOOD NEWS:

SLT (smokeless tobacco) use by **MEN** in the fire service is remarkably high...

### RESULTS:

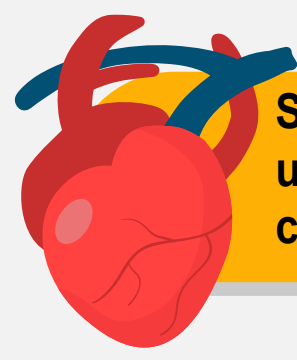
Among 947 **Men**  
 197 (21%) were tobacco users, of which  
 34.5% used cigarettes  
 53.2% used SLT  
 12.2% used both cigarettes & SLT



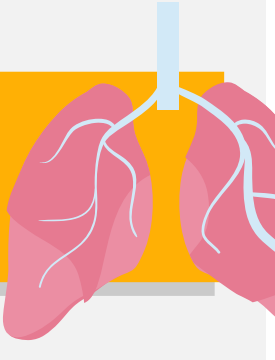
Male tobacco users of all types were significantly younger and had served fewer years in the fire service and were significantly more likely to engage in binge drinking, as well as more likely to show signs of depressive symptoms compared to non-tobacco users.



**18.4%** SLT use  
**2.6%** dual use of SLT and cigarettes  
 which is greater than the general population rates for males in any work force.

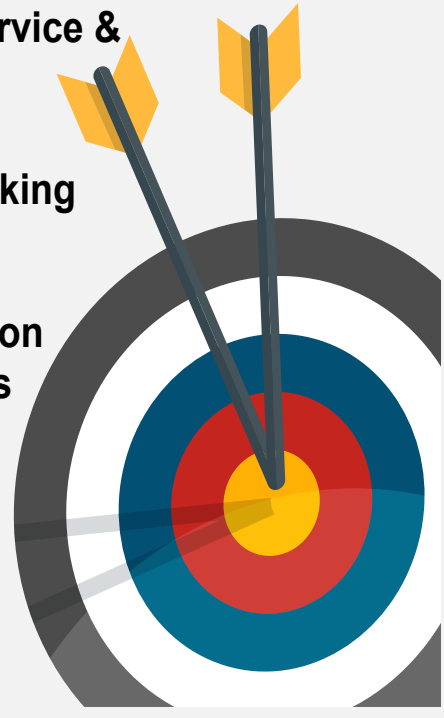


Studies have shown that dual users have greater health risks compared to other tobacco users.



### Possible Reasons For The High Use Of SLT Among Male Firefighters Include:

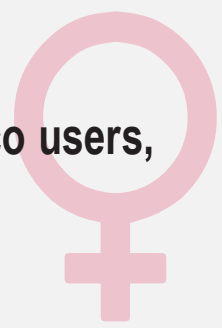
- The tobacco industry has engaged in targeted marketing to the fire service & other high-risk groups
- The prohibition of cigarette smoking in the fire house
- Ironically, the increased education about the negative health effects of smoking and awareness of increased exposure risk to toxic products of combustion



These factors could alter tobacco use behaviors by providing an opportunity for some smokers to become dual users and undermine smoking cessation attempts

### RESULTS:

Among 1,712 **Women**  
 352 (20.6%) were tobacco users, of which  
 24.2% used cigarettes  
 5.9% used SLT  
 ~1% used both cigarettes & SLT



In general, tobacco users were significantly younger, more likely to be single and less educated, and had less income compared with their non-tobacco using counterparts.

- The prevalence of smoking among women firefighters was substantially lower than the rates for U.S. adult women and male firefighters
- SLT use rates were comparable with U.S. adult women
- There was a strong and consistent association between drinking behaviors and tobacco use

